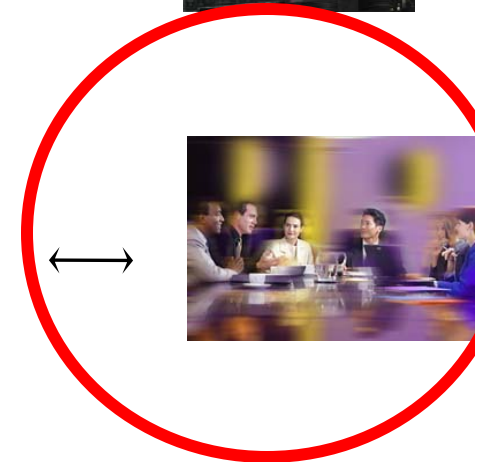




**CORIELL**  
Personalized  
Medicine  
Collaborative

[www.coriell.org](http://www.coriell.org)



# What Genome Information is *Potentially Medically Actionable?*

**ICOB = Informed Cohort Oversight Board**



## **ICOB Chair Dr. Erin O'Shea**

**Professor of Molecular Biology, Harvard University  
National Academy of Sciences  
Howard Hughes Investigator**

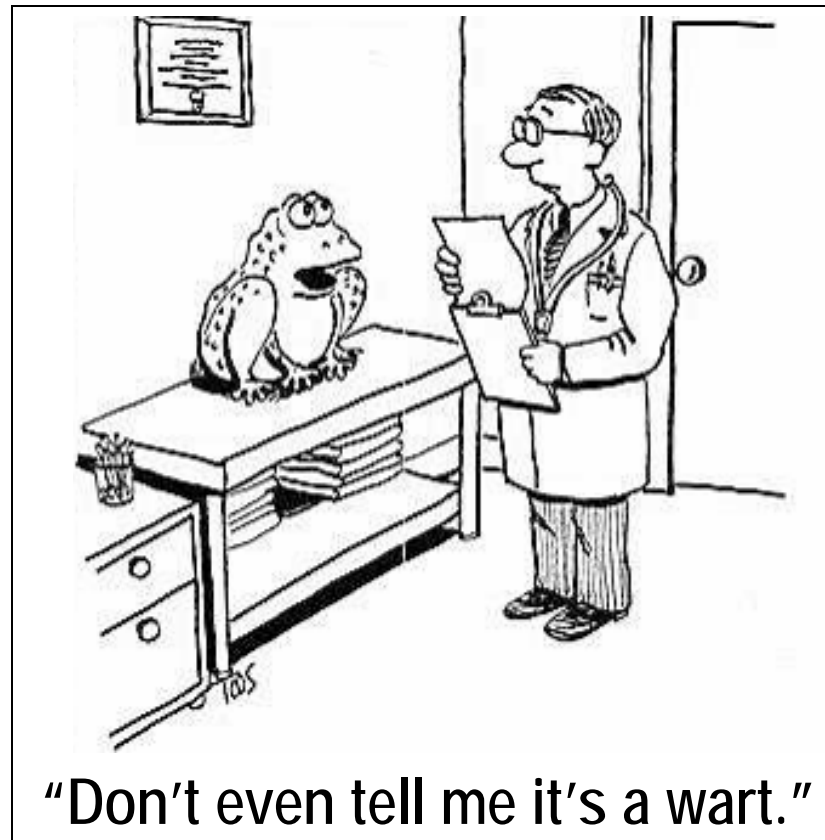
**\$600,000 Grant from RNR Foundation**

# Education of Medical Professionals

Collaborative Partners:



**CORIELL**  
INSTITUTE  
*for Medical Research*



**Input From Medical Professionals**

# What Do My Results Mean?



**Genetic Counselors** available at no cost  
In person or by phone



# Human Genome Center



**\$1,000,000 Grant from William G. Rohrer Foundation for IT infrastructure**



**10,000  
participants  
by end of 2009**



[Sign-In](#) | [Enroll Now](#) | [Help](#)

- [About CPMC](#)
- [How to Enroll](#)
- [My Genes](#)
- [Genetic Education](#)
- [Join the Discussion](#)

> Welcome to Coriell Personalized Medicine Collaborative



Coriell Personalized Medicine Collaborative will help to better understand the coming impact of genome-informed medical practice and to guide its ethical, legal and responsible implementation through a collaborative effort involving participant volunteers, physicians, scientists, ethicists and information technology experts.

#### Learn About Genomics



Explore our educational resources to learn about genomics and see why genes matter and how they influence health.



#### In the News

- [High Tech Medicine \(Courier Post\)](#)
- [Developing Up Close and Personal Medical Treatments \(NJBIZ\)](#)
- [Coriell's new goal: A health forecast just for you \(GCC\)](#)

#### CPMC Videos:



#### Quick Links:

- [How to Enroll](#) **GO**
- [Informed Consent](#) **GO**
- [FAQ](#) **GO**
- [Support the Collaborative](#) **GO**

#### Collaborative Partners:



[Contact CPMC](#) | [Privacy Policy](#) | [Terms of Use](#)

Copyright © 2008 Coriell Personalized Medicine Collaborative. All rights reserved.

# Coriell Institute is a Non-Profit Research Institute And the World's Leading Biobank

**CORIELL**  
**CELL REPOSITORIES**

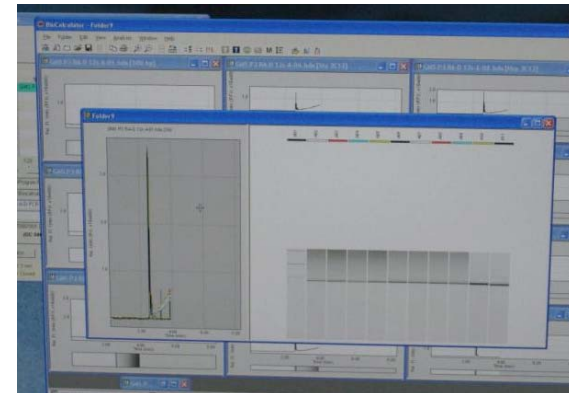
*Providing essential biological reagents  
to scientists around the world*



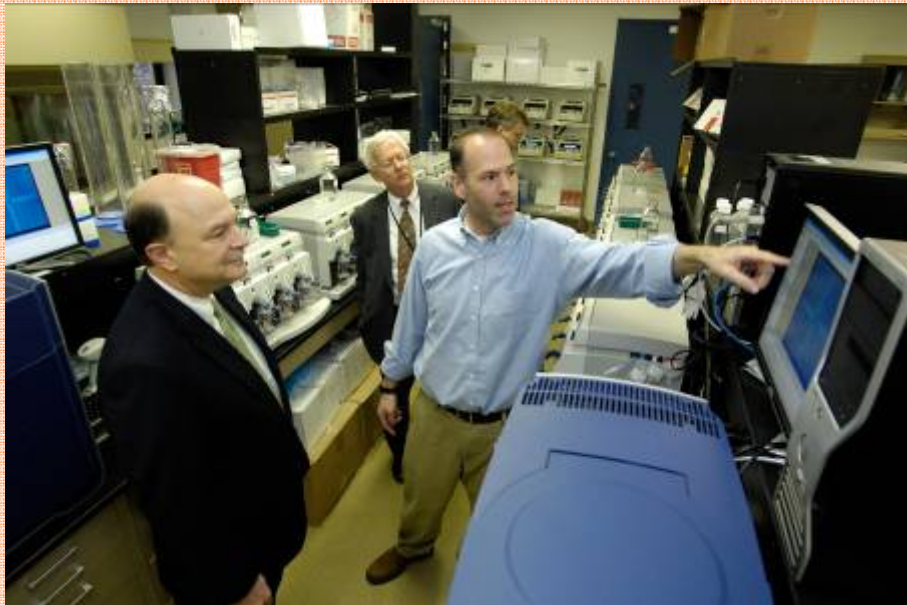
**40,000 Webpages**



**Shipments to 50 states, 62 countries**  
**NIH contracts since 1970's**



# HHS Visits Coriell



# Difficult Ethical, Legal and Social Issues

Ensuring genetic privacy



Anxiety associated with a genetic prognosis

How will doctors use the information?



Education of Participants, Doctors, Nurses and genetic counselors



*In vitro* fertilization

Insurance Companies

